

A STATEWIDE CELEBRATION OF SOUTH AUSTRALIAN INDIGENOUS ARTISTS

our MOB 2011

26 October - 11 December
Artspace Gallery and theatre foyers
Adelaide Festival Centre

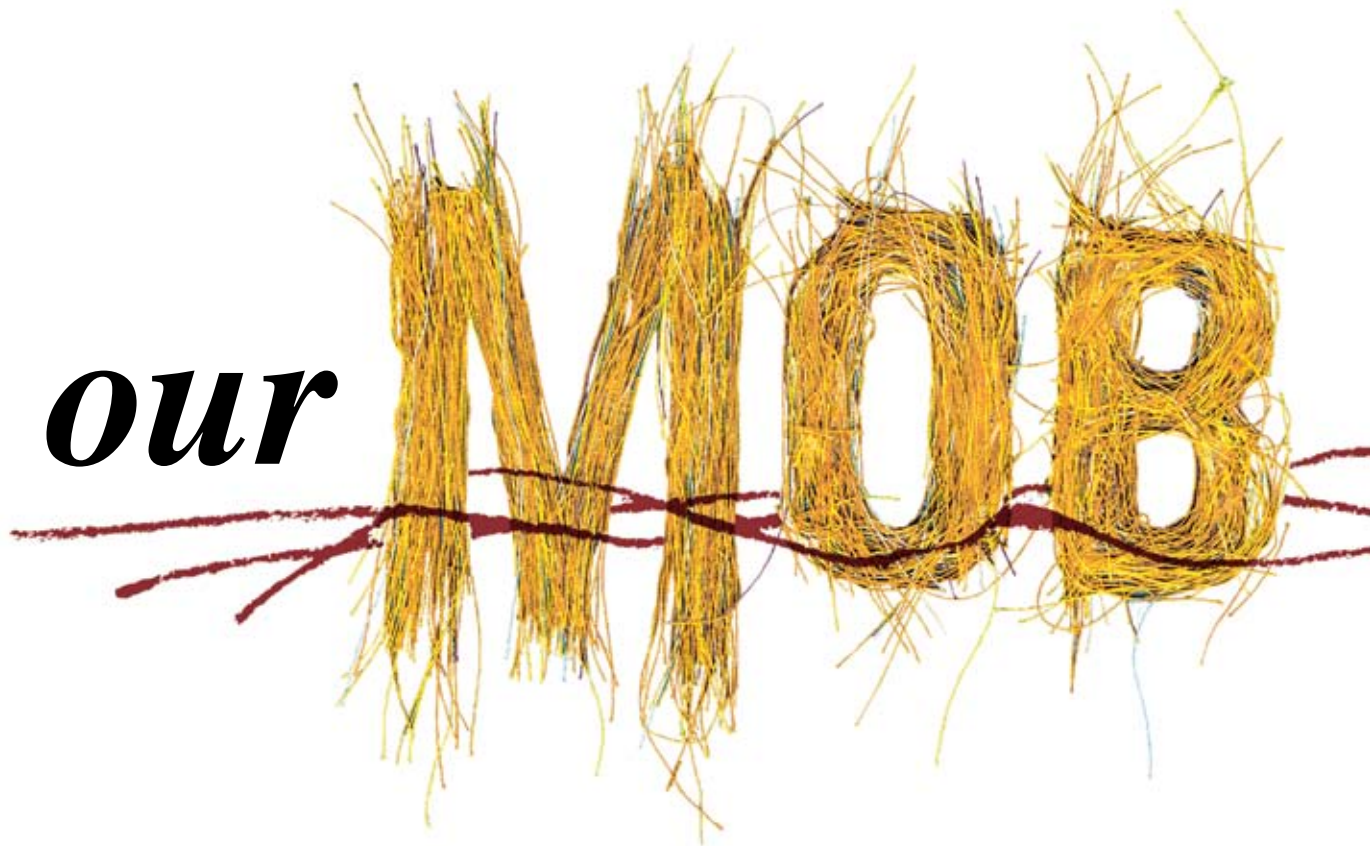


OUR MOB 2011: a statewide celebration of South Australian Indigenous artists
 Adelaide Festival Centre, Artspace Gallery and theatre foyers
 26 October – 11 December 2011

LEGEND

Key language groups	<i>Kaurna</i>
Communities and towns	● Ceduna
Regions	FAR WEST COAST





A STATEWIDE CELEBRATION OF
SOUTH AUSTRALIAN INDIGENOUS ARTISTS

26 October - 11 December 2011

From its beginning in 2006 OUR MOB has continued to be an exciting annual cultural project showcasing the strength and quality of South Australian Indigenous art and culture. Now in its sixth big year Adelaide Festival Centre is once again immensely proud to present *OUR MOB 2011: a statewide celebration of South Australian Indigenous art.*

Adelaide Festival Centre is committed to reconciliation with Australia's Indigenous people. Adelaide Festival Centre recognises that we are situated on the traditional land of the Kurna people and believe that OUR MOB contributes to the understanding of Aboriginal Australians and fosters harmony between peoples.

Adelaide Festival Centre collaborates with Aboriginal artists far and wide, our partners in the arts industry, and regional and remote arts organisations to bring Indigenous artists together in an exceptional exhibition. This exhibition provides the opportunity for artists from all over South Australia to be proud and united as South Australia's mob — OUR MOB.

There is great diversity in the experiences of Aboriginal people throughout South Australia. Through OUR MOB we can see the emergence and development of new and exciting regional Indigenous art centres as well as come to know the work of individual artists. This year we focus, through three smaller exhibitions as part of Our Mob, on four very different communities from different parts of South Australia; the Arrabanna peoples of Lake Eyre, the desert art centre Tjungu Palya and the communities of Indulkana and Oodnadatta. To understand the significance of these peoples history and the continuing importance of keeping their living culture alive and strong.

Adelaide Festival Centre has established a distinctive identity with its Indigenous Cultures Program through home-grown projects such as OUR MOB as well as exhibitions with partner Indigenous art centres and touring exhibitions.

We thank Arts SA for their significant contribution to OUR MOB 2011 through project funding which supports the involvement of artists from remote and regional areas in the forum, opening events and Artist-in-residence program. We acknowledge the important partnerships with Anangu Arts and Culture Aboriginal Corporation through SICAD (Statewide Indigenous Community Art Development) and Country Arts SA.

This year's OUR MOB Forum invites Indigenous artists, industry stakeholders and general public to engage in discussions about South Australian Indigenous art focusing on past and future exhibitions.

OUR MOB rightly takes its place among the nation's prestigious exhibitions of Indigenous art celebrating the energy, quality and diversity of the state's art providing us with an excellent snapshot of the current Indigenous art climate.

Douglas Gautier
CEO & Artistic Director
Adelaide Festival Centre



© COLLEEN RAVEN STRANGWAYS
Arrabanna Woman, 2011 (detail)
photograph, Arrabanna, Lake Eyre

Ananguku Arts and Culture Aboriginal Corporation was founded in 1997 by Aboriginal women at Ernabella and Kaltjiti to provide coordination and services at a regional level to artists on the Anangu Pitjantjatjara Yankunytjatjara (APY) Lands in far north-west South Australia.

In 2003, at the invitation of Arts SA, Ananguku Arts' Director Inawinytji Williamson, Chairperson Alison Carroll and General Manager Colin Koch toured the state to share their experience in the development and promotion of Indigenous artists and art centres on the Anangu Pitjantjatjara Yankunytjatjara (APY) lands. It was from this tour that the Statewide Indigenous Community Arts Development (SICAD) program was born in 2007. SICAD coordinates professional development workshops and exhibitions for Aboriginal artists living in regional and remote communities of South Australia.

In May this year, members of Ananguku Arts voted to make changes to the governance structure of the organisation. Membership was extended to all Aboriginal artists in South Australia and the Board was expanded to include representatives from each of the Art Centres on the APY Lands as well as six positions representing art centres and arts projects throughout the State.

These changes to the membership and Board of the organisation are significant in that Ananguku Arts is now a statewide service organisation for arts and culture representing all Aboriginal artists in South Australia. The organisation exists to assist the professional development of Indigenous artists towards the development of a sustainable and dynamic Indigenous arts industry across the whole of the State. As well, Ananguku Arts supports cultural maintenance activities by Indigenous artists, singers, dancers and story tellers across South Australia.

This year, in addition to the collection of works from artists from across the state, Ananguku Arts is pleased to present three small exhibitions in the main Festival Centre foyer. These exhibitions provide a snap shot of the sort of activities that Ananguku Arts supports across the state of South Australia.

Tjungu Palya features a selection of works from the art centre located at Nyapari, 100kms south of Uluru. The Indulkana – Oodnadatta Coming Together Workshops collection presents prints from a series of screen printing workshops held in Indulkana and Oodnadatta led by Melbourne-based artist Sue Anderson. Spirit of Lake Eyre – Arrabanna Country, a photographic exhibition by Arrabanna photographer, Colleen Strangways, captures the essence of Lake Eyre and its significance and importance to the Arrabanna people.

These three exhibitions, as well as works from artists from the West Coast and Far West, Port Augusta, Coober Pedy and Oodnadatta, Flinders Ranges, Riverland, Murraylands, the South East and the APY Lands, provides a wonderful perspective of the richness and diversity of Indigenous art in South Australia today.

Each year Our Mob keeps growing and changing. This year the Our Mob 2011 Forum, 'South Australian Indigenous artists: past works and future exhibitions' offers talks and presentations by several leading South Australia Indigenous artists as well as tours of several exhibitions at the South Australian Museum. This year also sees Our Mob move from August to late October. Both these initiatives have been designed to further engage students, artists, artworkers and curators as well as members of the South Australian public in the beauty of Indigenous art here in South Australia today.

In its sixth year, Our Mob has become a feature on the South Australian art scene. Ananguku Arts is pleased once again to be a part of presenting Our Mob at Adelaide Festival Centre and looks forward to its ongoing success and development in future years.

Elizabeth Tregenza

General Manager
Ananguku Arts and Aboriginal Cultural Aboriginal Corporation

Assisting communities and individuals to tell their stories is central to the work that we undertake everyday at Country Arts SA. Over the last six years an incredibly important story has been developing through the OUR MOB exhibitions which bring together South Australian Aboriginal artists from regional and remote areas of our state in a visual celebration and narrative that is continually developing.

Country Arts SA has been proud to work in partnership with Adelaide Festival Centre to support the exhibitions, which have been a very important and visible outcome from the SICAD (Statewide Indigenous Community Arts Development) project established in 2005.

The OUR MOB exhibitions and the SICAD project have connected Aboriginal artists from across the state, enabling them to share their stories and influences with each other and the thousands of people that have visited the exhibitions both at the Festival Centre Artspace and at the many galleries across the state which have displayed the touring exhibitions which have been developed.

Country Arts SA is proud to have been able to tour OUR MOB 06 – ON TOUR, OUR MOB 08 – ON TOUR and OUR MOB 2010 – ON TOUR through our Visual Arts Touring Program. These shows have proved

incredibly popular with regional audiences who have been excited by the diverse art forms on show and engaged by the tales which have been woven through the exhibitions.

Exhibiting the work of South Australian Aboriginal artists is an integral component of our Visual Arts Touring Program. We are currently touring a number of exhibitions including Maralinga: The Anangu Story, Desert To Dunes, Buffalo, Bird and Bandicoot and Wata (Wind).

We look forward to working with Adelaide Festival Centre in the coming years on the further development of the OUR MOB exhibitions, as well as the many artists we come into contact with through the process. I have no doubt that the OUR MOB 2011 will be another great chapter in this fascinating tale.

Steve Saffell

Chief Executive Officer, Country Arts SA

COMING TOGETHER. GOOD TOGETHER

The Spirit of Lake Eyre – Arrabanna Country

Lake Eyre Basin covers one-sixth of this continent and holds some of the rarest, least exploited ecosystems on the planet. Lake Eyre is also home to the Arrabanna people. It has been for tens of thousands of years. The traditional stories of the Arrabanna are complex and deeply connected with knowledge and respect for Country. In contemporary terms their cultural knowledge guides natural resource management - a system which has proven sustainable for millennia.

In early March this year heavy rain brought water to the normally dry Lake Eyre Basin. The higher rainfall prompted many different birds to migrate back to the area for breeding. But it was not just the Sharp-tailed Sandpipers and Caspian Terns that returned, people in yachts came to sail on the Lake. The Arrabanna people moved to protect their Country. They called on visitors to respect the ecological, cultural and spiritual significance of Lake Eyre to the Arrabanna people. In response the commodore of the Lake Eyre Yachting Club encouraged those in boats to defy bans and sail without a permit on Lake Eyre.

In this exhibition, Arrabanna photographer, Colleen Strangways, makes a strong personal and cultural statement about Indigenous presence and place. She anchors Arrabanna people, their ancestral stories and continuing ownership and governance of country, in the spirit of Lake Eyre and Warrener – ‘Lake Eyre boss of the Lake’. The photograph ‘Arrcia-ya’ dramatically captures the spiritual power of the lawman and healer; a metamorphic figure literally rooted to place. There is the calm dignity of ‘Arrabanna Woman’ whose connection to Country is confirmed by her reflected image. At night, the same Arrabanna woman holds the gaze of the viewer with a defiance and strength that cannot be ignored. The grace of an Arrabanna boy, mirrored in Lake Eyre, captures continuing spiritual connection to place and hope for the future.

These photographs were taken on the same weekend that a helicopter crashed on the Lake Eyre shores killing the ABC journalist, photographer and pilot on board. Hearing the news, an Arrabanna man conducted sorry business ceremony – an acknowledgement of the lives and the spirit of these three visitors to Lake Eyre. In this exhibition the photographs of Colleen Strangways ask the same of us – an acknowledgement and respect for the country, lives and spirit of the Arrabanna people and Lake Eyre.

Tjungu Palya – selected works

In less than a decade a contemporary painting practice has emerged that is vibrant in colours, forms, textures and stories that communicate the transcendent powers sensed in Country. Tjungu Palya artists represent the last frontier of Western Desert art. Situated in the far west of the APY Lands, at the base of the remote Mann Ranges, Tjungu Palya brings together artists who live in the Pitjantjatjara communities of Watarru, Nyapari and Kanpi. Tjungu Palya means ‘Good Together’ and refers to this collaboration between homelands.

The remoteness of these small communities means that senior artists have lived in ways rich in ceremony and traditional observances. Some of the artists are depicting their Tjukurpa (Dreaming) and Country for the first time. As a child David Miller travelled with his family on foot over vast distances from Warburton (WA) to Ernabella (SA) for ceremonial occasions and trading of dingo scalps for tea and flour. His work ‘Wati Ngintaka’ tells of a nephew who changes into a hills kangaroo to follow the group who have killed his uncle. Tjampawa Stevens paints her spiritual links in ‘Kulpitjara’, the creation story for the Emu. And Beryl Jimmy, from Watarru country, depicts ‘Kapi Tjukula’ - the deep rock holes and travelling tracks people would travel in early days, collecting bush foods and setting up camp.

Anangu culture is family culture. Widespread production of collaborative paintings that include both senior and younger Anangu is a strong expression of this co-operative family spirit of cultural maintenance. In this exhibition Yarity Stevens paints the epic narrative ‘Kungkarungkalpa – Seven Sisters’ Story’ with her two daughters Sallyanne and Katrina Roberts. The Tjurkupa tells of seven sisters travelling a vast distance across the Western Desert obsessively chased by a lustful man (Wati Nyiru) with special powers. The energy of the chase is enacted in bold colours and profuse dots and linear markings that are as inventive and transformative as the narrative itself.

Aboriginal cultures tend towards concealment rather than revelation and these robust works from Tjungu Palya evoke rather than disclose each artist’s inherited Tjurkupa. The stories tell more than the heroic exploits of Ancestors. They provide rules for living, a moral code, as well as crucial information for survival and rules for interacting with the natural environment. The multiple and complex layers of meaning may be hidden but what is powerfully revealed is the Tjungu Palya artists’ deep connection to country and spiritual links to the desert in works of integrity, beauty and robust creativity.



Indulkana-Oodnadatta Coming Together Workshops

Indulkana and Oodnadatta lie only 300 kilometres apart – a stone’s throw in central-Australian distances. However, since white settlement, the Stuart Highway and railway to Alice Springs have divided the communities creating two different stories. This exhibition brings the two communities together and is a reminder that the Anangu of Indulkana and Oodnadatta are people with a shared family and Indigenous cultural history.

‘Indulkana-Oodnadatta Coming Together Workshops’ features prints from a series of screen-printing workshops held in each of the two communities earlier this year. In the first workshop it was the women from Oodnadatta who travelled to visit the mainly Yankunytjatjara people living on the eastern side of the APY Lands, eight kilometres from the Stuart Highway, on a dust rock ridge called Indulkana. In the return visit established Indulkana artists Maringka Burton and Alec Baker worked alongside the less experienced Oodnadatta artists in a shed.

Melbourne artist, Sue Anderson, led the workshops and she was struck by the literal hum of creativity – artists singing into existence mark-making linked by webs of thought to the Dreaming. The link between sight, touch and sound recalls the integration of senses in traditional ceremony. It is literal meanings, visual elements, sound, aesthetics and the geographical and cultural significance of the art which constitutes the total meaning for Anangu.

Similarly it was the coming together of families, shared histories, and the smell of smoke, the taste of singed kangaroo tails, the shared songs of Country and the collaborative print making that constitutes the total meaning of the prints in this exhibition. These bold, colourful works make a strong cultural statement about land, ceremony, ancestry and survival.

Sara White

Curator

TOP © SUE ANDERSON,
photographs from Indulkana-
Oodnadatta Coming Together
Workshops

LEFT © RUTH FATT *Pukara*,
2011 Tjungu Palya, Nyapari



© CHRISTINA GOLLAN
Pomegranate, 2011 Raukkan, SA



© EMILY CULLINAN *Punu (Wood)*, 2011
Iwantja Arts, Indulkana



© **REG DODD** *Jo at Lake Eyre*, 2011 (detail) Lake Eyre, SA



© **MARY WARE** *Keepers of the deep-Our next generation* 2011 (detail) Kuju Aboriginal Arts & Crafts, Port Lincoln



© **MAUDE A PARKER** *Leafy Sea Dragon*, 2011 Riverland, West Coast and Adelaide communities



© **KAY FINN** *Dunjiba* 2011 Oodnadatta, SA

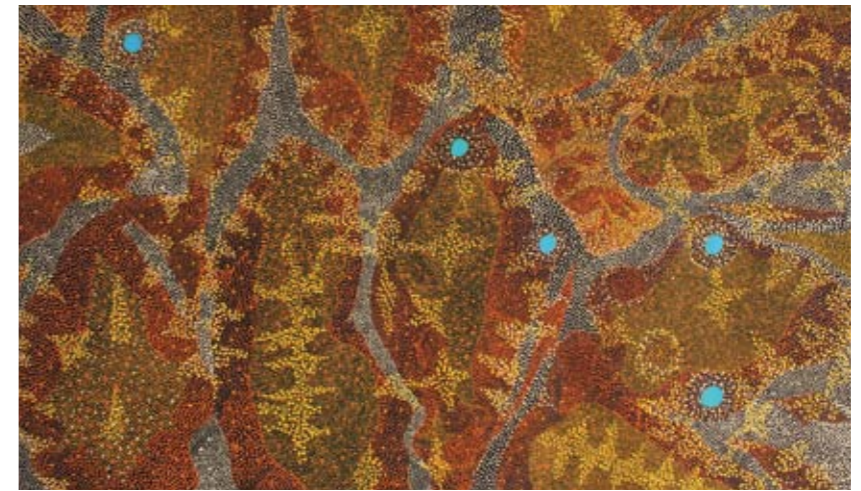


© **JACK SAILOR** *My Turtles and Dugong* 2011 Mt Gambier, SA



© ADA HART *Seven Sisters*, 2011 Oak Valley Community, Arts and Learning Centre

© TJULKIWA ATIRA ATIRA *Arulya*, 2011 (detail) Ninuku Arts, Kalka



© IMIYARI (YILPI) ADAMSON *Ernabella Mission Days*, 2011 Anangu Pitjantjatjara, Better World Arts

© VERA LAWRIE *The Rockholes in my Country*, 2011 Ceduna Arts & Culture Centre, Ceduna

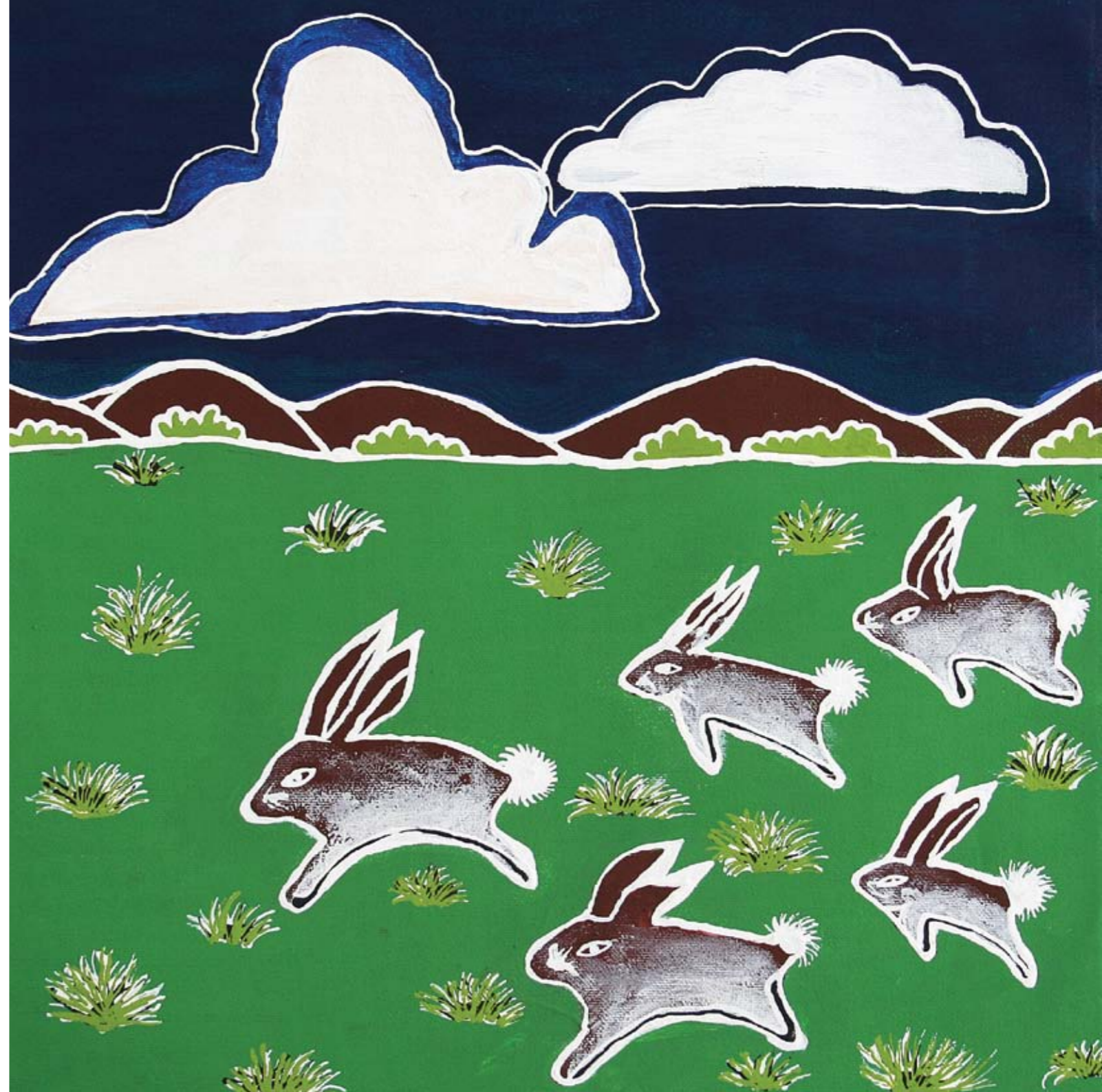


© JILLIAN LARKING *Swamp Land*, Kuju Aboriginal Arts & Crafts, Port Lincoln



© YURPIYA LIONEL *Anumara*, 2011
Ernabella Arts, Pukatja

© WESLEY TSCHUNA *Miwya Rabbits*, 2011
Ceduna Arts & Culture Centre, Ceduna



PARTICIPATING ARTIST & LIST OF WORKS

Artists are listed here in alphabetical order by Christian name. Where possible, and if provided, information about the artist is given in this order: name, date of birth, Aboriginal language group/s and current community or art centre affiliations. Language groups have been spelt according to the wishes of the artists concerned.

ADA HART

Pitjantjatjara people,
Oak Valley/Maralinga
Seven Sisters
wood 60 x 115 cm
Oak Valley Community,
Arts and Learning Centre

ALEC BAKER

b. 1932 Yankunyatjara people,
Indulkana community
Punu (Wood)
acrylic on linen 51 x 76 cm
Iwantja Arts, Indulkana

AMARI TJALKURI

b. c. 1960 Pitjantjatjara people,
Walka
acrylic on canvas 107 x 76 cm
Watarru

ANDY TJILARI

b. 1934 Pitjantjatjara people,
Wati Patilpa
acrylic on canvas 36 x 70 cm
Anangu Pitjantjatjara
Yankunyatjara Lands

ANNETTE ROSE (LAWRIE) DODD

Pitjantjatjara people,
Oak Valley/Maralinga
Punu-making artifacts
painting 54 x 43 cm
Oak Valley Community,
Arts and Learning Centre

BEAVER LENNON

b. 1988 Mirning people
Beginning of a New Day
acrylic on canvas 71 x 115 cm
Ceduna Arts & Culture Centre,
Ceduna

BERYL JIMMY

b. 1970 Pitjantjatjara people,
Watarru community
Kapi Tjukula
acrylic on canvas 120 x 100 cm
Tjungu Palya, Nyapari

CASSANDRA UNMEOPA

b. 1988 Thursday Island people
Indigenous Sphere
painted egg dimensions variable
Mt Gambier, SA

CEDRIC VARCOE

b. 1984 Ngarrindjeri people,
Point Pearce, Raukkan communities
*Hunting Emu and collecting fish
and cockles*
acrylic on canvas 100 x 120 cm
Port Pirie, SA

CHRIS ACKLAND

b. 1971 Kokatha people
Low Tides
acrylic on canvas 100 x 100 cm
Adelaide, SA

CHRIS DODD

Pitjantjatjara people,
Oak Valley/Maralinga
Didgerdoo
wooden didgeridoo 150 x 8 cm
Oak Valley Community,
Arts and Learning Centre

CHRISTINA GOLLAN

Ngarrindjeri people,
Raukkan South East community
Pomegranate
ceramic 38 x 39 x 39 cm
Raukkan, SA

CHRISTINE LENNON

Dunjiba/Oodnadatta community
Ngintaka (The Perentie)
painting 50 x 60 cm
Oodnadatta, SA

CHRISTINE LENNON

Dunjiba/Oodnadatta community
Ngintaka (The Perentie)
painting 50 x 60 cm
Oodnadatta, SA

CHRISTINE TSCHUNA

b. 1949 Wirangu people
Seven Sisters in the Milky Way
acrylic on canvas 82 x 128 cm
Ceduna Arts & Culture Centre,
Ceduna

DAVID MILLER

b. c. 1950 Pitjantjatjara people,
Kanpi community
Wati Ngintaka
acrylic on canvas 127 x 200 cm
Tjungu Palya, Nyapari

DAWN BROWN

Yankunyatjara
Umoona Community
Honey Ant Gathering
acrylic on canvas
Cooper Pedy, SA

DENISE SCOTT

Mirning people
*Surrounded by Mallee Trees
and Sand dunes*
acrylic on canvas 88 x 56 cm
Ceduna Arts & Culture Centre,
Ceduna

DIANE EDWARDS

Yankunyatjara
Untitled
acrylic on canvas
Cooper Pedy, SA

DON TSCHUNA

Kokatha people, Yalata community
Kangaroo Dreaming
lino print 58 x 48 cm
Ceduna Arts & Culture Centre,
Ceduna

DONNA COULTHARD

Adnyamathanha
Untitled
ceramic
Copley, SA

DOUGLAS UNMEOPA

Torres Strait Islander
Shell necklace (mens)
jewellery dimensions variable
Mt Gambier, SA

EDOARDO CRISMANI

Pitjantjatjara people
*The River beneath the sea-part
one-The Initiation*
acrylic on canvas 20 x 14 cm
Adelaide, SA

*The River beneath the sea-part
five-The ancient ones*
acrylic on canvas 20 x 14 cm
Adelaide, SA

EILEEN STANLEY

Pitjantjatjara, Mimili
*Waterholes women place
dreaming Mimili*
acrylic on canvas
Cooper Pedy, SA

ELIZABETH RYAN

b. 1949 Palm Island, Qld
Spring Time
acrylic on canvas 85 x 85 cm
Ceduna Arts & Culture Centre,
Ceduna, SA

ELLA ACKLAND

b. 2001 Kokatha people
Family of Five
acrylic on canvas 40 x 30 cm
Adelaide, SA

ELLEN S. MACUMBA

Arrente-Eurindji community
Up North
acrylic on canvas
Pt Augusta, SA

ELMA LAWRIE

b. 1947 Mirning/Kokatha peoples,
Koonibba community
*Bluebush and Waterholes on the
Nullarbour*
acrylic on canvas 103 x 89 cm
Ceduna Arts & Culture Centre,
Ceduna

EMILY CULLINAN

b. 1952 Yankunyatjara people,
Indulkana community
Punu (Wood)
acrylic on canvas 91 x 91 cm
Iwantja Arts, Indulkana

ESTELLE MILLER

b. 1974 Wirangu Mirning peoples,
Nice Day on the Water
pastel on paper 66 x 48 cm
Ceduna Arts & Culture Centre, Ceduna

GLADYS WILTON

Nepabunna, Adnyamathanha
Untitled
Ceramic
Copley, SA

GLENDA RICHARDS

Kokatha people
Seven Sisters
acrylic on canvas 90 x 46 cm
Ceduna Arts & Culture Centre, Ceduna

GEORGE COOLEY

Yankunyatjara
Umoona Community
Painted Desert Landscape
work on paper
Cooper Pedy, SA

GRACE SAILOR

Communities
painting 34 x 44 cm
Mt Gambier, SA

HAYLEY O'TOOLE

Antakirinja/Yankunyatjara
Umoona Community
Family Tree
acrylic on canvas
Cooper Pedy, SA

IMIYARI (YILPI) ADAMSON

b. 1954 Pitjantjatjara people
Ernabella Mission Days - Bush Holiday
acrylic on canvas 61 x 76 cm
Anangu Pitjantjatjara

INAWINYTJI TJINGLYA

Williamson, Anangu Pitjantjatjara
Yankunyatjara Lands
*Kungkarangkalpa - Seven Sisters
Dreaming*
acrylic on canvas
Adelaide, SA

JACK SAILOR

Thursday Island
My Turtles and Dugong
acrylic on canvas
Mt Gambier, SA

JANE DOOLAN

Yankunyatjara
Untitled
acrylic on canvas
Cooper Pedy, SA

JANINE GRAY

b. 1954 Scotdesco Homelands
*Women (Minyama) and Big (Bulga) Wind
(Walba) Dancing in the Moonlight*
acrylic on canvas 102.5 x 79 cm
Ceduna Arts & Culture Centre,
Ceduna

JANNENE PICKETT

Nyoongar people
River Runs Dry
acrylic on canvas 70 x 100 cm
Kuju Aboriginal Arts & Crafts,
Port Lincoln, SA

JEFFERY MACK

b. 1950 Yankunyatjara people
Untitled
acrylic on canvas 60 x 45 cm
Oodnadatta, SA

JILLIAN LARKING

Mirning people
Swamp Land
acrylic on canvas 58 x 56.5 cm
Kuju Aboriginal Arts & Crafts,
Port Lincoln

JOYLENE HAYNES

b. 1942 Kokatha people
Painted Lake
acrylic & impasto on canvas 80 x 70 cm
Ceduna Arts & Culture Centre, Ceduna

JULIE AMOS

Antikirinya people
Country after rain
painting 50 x 60 cm
Oodnadatta, SA

KAY FINN

Yankunyatjara/Pitjantjatjara
Dunjiba
acrylic on canvas 50 x 60 cm
Oodnadatta, SA

KIANA STAFFORD

Anmatyerr people
Women Body Painting
acrylic on canvas 96 x 75.2 cm
Kuju Aboriginal Arts & Crafts,
Port Lincoln

LILI ACKLAND

Kokatha people
Coming Together
acrylic on canvas 20 x 20 cm
Adelaide, SA

LILLY ULAH PINUKA

Yankunyatjara
Indulkana
Untitled
acrylic on canvas
Cooper Pedy, SA

LINDA COULTHARD

Adnyamathanha
Untitled
ceramic
Copley, SA

MARALYN AN CHEE BROWN

Oodnadatta
Untitled
acrylic on canvas
Oodnadatta, SA

MARGARET FARRUGIA

b. 1941 Nyungah (Noongah) people
Butterfly Heaven
acrylic on canvas 100 x 100 cm
Gawler, SA

MARGARET MAY

Pitjantjatjara people,
Oak Valley/Maralinga
Minyma hunting for lizard
painting 51 x 30.5 cm
Oak Valley Community,
Arts and Learning Centre

MARIA BAKER

Pitjantjatjara people,
Oak Valley/Maralinga
Minyma hunting for bush foods
painting 61 x 91.5 cm
Oak Valley Community,
Arts & Learning Centre

MARY WARE

b. 1945 Mirning people
Keepers of the deep- Our next generation
acrylic on canvas 96 x 94 cm
Kuju Aboriginal Arts & Crafts,
Port Lincoln

MARYANNE SCRUTTON

b. 1970 Western Arrente people,
Hermannsburg community, NT
Healing Smoke
acrylic on canvas 75 x 101 cm
Port Pirie, SA

MARVYN FREDERICK MCKENZIE SNR

Adnyamathanha Ararru Yura
King William the Fourth 1836
Letters Patent Evoked
poem
Pt Augusta, SA

MAUDE A PARKER

b. 1956 Ngarrindjeri/Kokatha peoples
Leafy Sea Dragon
acrylic on canvas 76.5 x 51 cm
Riverland, West Coast and Adelaide
communities

MAUREEN BAKER

Pitjantjatjara people,
Kanpi community
Minyma Kutjara
acrylic on canvas 113 x 135 cm
Tjungu Palya, Nyapari

MILLIE MYSON

Yankuntjatjara people
Wild peaches women's meeting
Painting 50 x 60 cm
Oodnadatta, SA

MOLLY BROWN

Yankunyatjara
Rock holes
acrylic on canvas
Cooper Pedy, SA

MOLLY CULLINAN

b. c. 1941 Yankunyatjara people,
Indulkana community
Ngura (Country)
acrylic on canvas 94 x 61 cm
Iwantja Arts, Indulkana

MULYKUYA KEN

b. 1948 Pitjantjatjara people,
Walka-Tjulpun Tjulpunpa (Wild Flower Design)
acrylic on canvas 85 x 59 cm
Anangu Pitjantjatjara Yankunytjara Lands

MURRAY AND KANGINY GEORGE

b. 1949/1949 Pitjantjatjara people,
Kungkarangkalpa- Seven Sisters Story
acrylic on canvas 112 x 112 cm
Anangu Pitjantjatjara Yankunytjara Lands

NAMI (UNURUPA) KULYURU

b. 1962 Pitjantjatjara people,
Walka-Batik design
acrylic on canvas 66 x 91 cm
Anangu Pitjantjatjara Yankunytjara Lands

NARELLE UNMEOPA

b. 1971 Tasmanian Aboriginal descent
Boomerang flight
carved emu egg dimensions variable
Mt Gambier, SA

NELLIE COULTHARD

Pitjantjatjara people,
Indulkana community
Tjanpi Baskets
acrylic on canvas 61 x 76 cm
Iwantja Arts, Indulkana

NIKKI CARABETTA

Brinkin, Yamagi people, Kulaluk
community
Journey
acrylic on canvas 100 x 75 cm
Adelaide, SA

NOBLELENE G. MACKENZIE-STUART

Adnyamathanha and Arabanna
and Luritja people
*Idnya and Vardna (Goanna and
native cat love story)*
acrylic on canvas 120 x 80 cm
Pt Augusta, SA

Warraty Vippi 1

egg carving dimensions variable
Pt Augusta, SA

Warraty Vippi 2

egg carving dimensions variable
Pt Augusta, SA

PETER MUNGKURI

b. 1946 Pitjantjatjara people,
Indulkana community
Ngura (Country)
acrylic on canvas 99 x 101 cm
Iwantja Arts, Indulkana

PRESTON ENALANGA

b. 1958 Western Arrente people,
Hermannsburg community, NT
Thorny Devil dreaming
acrylic on canvas 112 x 86 cm
Port Pirie, SA

RAMA KALTU-KALTU SAMPSON

b. 1936 Pitjantjatjara people,
Kuntjanu-Wanampi Tjukurpa
acrylic on canvas 102 x 102 cm
Anangu Pitjantjatjara
Yankunytjara Lands

REG DODD

Arabunna people,
Marree community
Jo at Lake Eyre
photograph 38 x 45 cm
Marree, SA

Tree and Cloud

photograph 38 x 45 cm
Marree, SA

ROGER (BUSHFIRE) SAUNDERS

b. 1945 Ngarrindjeri people
Bungle Bungle Spirit
acrylic on canvas 110 x 80 cm
Coobowie, SA

RUTH FATT

b. c. 1960 Pitjantjatjara people,
Kanpi community
Pukara
acrylic on canvas 200 x 150 cm
Tjungu Palya, Nyapari

SANDY BRUMBY

b. 1966 Yankunyatjara people,
Pipalyatjara community
Walytjatjara
acrylic on linen 107 x 91 cm
Ninuku Arts, Kalka

SAMUEL MILLER

b. 1966 Pitjantjatjara people,
Kalka community
Ngayuku Ngura
acrylic on canvas 107 x 91 cm
Ninuku Arts, Kalka

SUZIE PRINCE

Yankunyatjara
Indulkana
Untitled
acrylic on canvas
Cooper Pedy, SA

TJAMPAWA STEVENS

b. 1947 Pitjantjatjara people,
Nyapari community
Kulpitjara
acrylic on canvas 100 x 150 cm
Tjungu Palya, Nyapari

TJULKIWA ATIRA ATIRA

b. 1951 Pitjantjatjara people,
Pipalyatjara community
Arulya
acrylic on linen 107 x 92 cm
Ninuku Arts, Kalka

TJUNKAYA TAPAYA

b. 1947 Pitjantjatjara people
Kungkarangkalpa Attila
acrylic on linen 122 x 122 cm
Ernabella Arts, Pukatja

VERNA LAWRIE

b. 1953 Mirning people
The Rockholes in my Country
acrylic on canvas 94 x 134 cm
Ceduna Arts & Culture Centre,
Ceduna

VERONICA COULTHARD

Adnyamathanha
Untitled
ceramic
Copley, SA

VERONICA NAKAMARRA STAFFORD

b. 1971 Anmatyerr people, Yuelumu
community, NT
Witchetty Grub Dreaming
acrylic on canvas 116 x 79 cm
Kuju Aboriginal Arts & Crafts,
Port Lincoln

WESLEY TSCHUNA

Miwya Rabbits
acrylic on canvas 33 x 34 cm
Ceduna Arts & Culture Centre,
Ceduna

WIPANA JIMMY

b. 1935 Pitjantjatjara people,
Watarru community
Illpili
acrylic on canvas 146 x 94 cm
Tjungu Palya, Nyapari

YARITJI STEVENS, SALLYANNE & KATRINA ROBERTS

Pitjantjatjara people,
Nyapari community
Kungkarangkalpa - Seven Sisters' Story
acrylic on canvas 167 x 198 cm
Tjungu Palya, Nyapari

YURPIYA LIONEL

b. 1960 Pitjantjatjara people,
Kanpi community
Anumara
acrylic on linen 90 x 150 cm
Ernabella Arts, Pukatja

ACKNOWLEDGEMENTS

Adelaide Festival Centre gratefully acknowledges the generous funding support from the South Australian Government through an Arts SA project grant.

We also acknowledge and thank Indigenous artists throughout South Australia for their faith in the continuation of *OUR MOB* into its sixth big year and whose enthusiasm and creative vision allows Australians to share in cultural understanding through the arts.

In bringing together this exhibition, the Festival Centre thanks and acknowledges the ongoing support of Anangu Arts and Culture Aboriginal Corporation and its SICAD (Statewide Indigenous Community Arts Development) project, Country Arts SA and in particular their regional Arts Officers, the many regional Aboriginal community art and culture centre managers and co-ordinators and the managers of the seven Aboriginal art centres across the Anangu/ Pitjantjatjara/ Yankunytjatjara Lands of South Australia.

Adelaide Festival Centre is indebted to the artists and all the people who work to make *OUR MOB* a reality. The Festival Centre thanks them for their commitment, faith and dedicated efforts in bringing the project to fruition.

OUR MOB 2011: a statewide celebration of South Australian Indigenous artists

Published by
Adelaide Festival Centre
GPO Box 1269, Adelaide 5001
artspace@adelaidefestivalcentre.com.au

© the artists, the authors,
Adelaide Festival Centre Trust 2011
ISBN: 978 0 9807040 8 2

Adelaide Festival Centre
King William Rd, Adelaide SA 5000
Tel: (08) 8216 8600
Fax: (08) 8212 7849
www.adelaidefestivalcentre.com.au

The Adelaide Festival Centre gratefully acknowledges the generous support of the State Government through Arts SA.



Government of South Australia
Arts SA

The Adelaide Festival Centre gratefully acknowledges the commitment of its sponsors and the support of our corporate hospitality members.

OUR MOB 2011 was officially opened on October 26th 2011 by the Honorable Grace Portolesi, Minister for Aboriginal Affairs and Reconciliation with special performances by Kurruru's Binnanendi Traditional Boys and musicians Seth Dodd and Andrew Crowell

ADELAIDE FESTIVAL CENTRE TRUSTEES

Barry Fitzpatrick AM, Chair
Susan Clearihan
Caroline Cordeaux
Zannie Flanagan AM
Ian Kowalick AM
Carolyn Mitchell
Bill Spurr
Hieu Van Le AO

ADELAIDE FESTIVAL CENTRE MANAGEMENT

DOUGLAS GAUTIER
CEO & Artistic Director
KAREN BRYANT
Associate Director

CARLO D'ORTENZIO
Chief Financial Officer

MARY-ANNE O'LEARY
Manager Marketing &
Corporate Relations

ANDREW WRONIAK
Manager Finance

MICHAEL MCCABE
Manager Venue Services

KAREN WILSON
Manager BASS

PETER MORELLI
Manager Food & Beverage

PAUL O'LEARY
Manager Information,
Communications & Technology