

Adelaide Festival Centre presents

# inSPACE: DEVELOPMENT

JANUARY – DECEMBER

Adelaide Festival Centre's inSPACE program is a cutting-edge, grassroots, innovative program that supports some of Australia's most talented, independent artists. See hot new talent across all art forms including theatre, dance, visual arts and music. Be part of the artistic conversation: sharing, contributing and discovering how art is created behind the scenes. This creative blurring of the line between artist and audience reinforces Adelaide Festival Centre's foundation philosophy that art belongs to everyone.

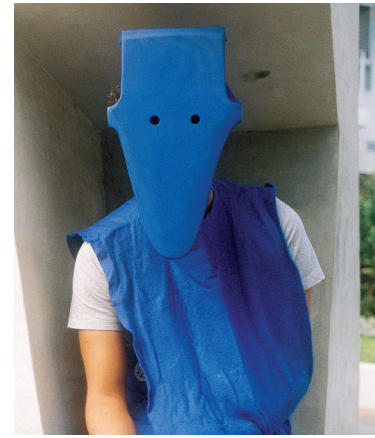


## Move Along

*Move Along* is a multimedia walking tour that explores themes of love, dispossession, and visibility. Video and sound guide you on a unique urban adventure dotted with performances, culminating in interwoven site-specific narratives.

Creative Producer  
**Jennifer Greer Holmes**

Collaborators  
**Heath Britton, Ferry, Belinda Gehlert, Josephine Were, Alexis West, Jaru West**



## IMMI

The brainchild of artist Kaspar Schmidt Mumm, *IMMI* is a mishmash of poetry, music, photography, videography, animation, graphic design, visual art and performance, developed in collaboration with some of Adelaide's best creative talent.

Poetry  
**Dom Symes**

Music  
**Adrian Schmidt Mumm, Ben Sargent, Declan Casley-Smith, Dillon Mueller, Damon Satanik**

Photography  
**Emmaline Zanelli, Sia Duff**

Videography  
**Jerome Williams, Michael Masonite, Corduroy**

Curators  
**Joanna Kitto, Rayleen Forester (Fineprint Magazine)**

Virtual Set Design  
**Claire Marwick Smith**

Animator  
**Liam Bosecke**

Graphic Design  
**James Brown IV**



## s/words

*s/words* attempts to understand the rights and responsibilities of free speech in a polarised world through distilling the works of Milton, Payne and Mill into an approachable, hilarious contemporary dance piece, incorporating text, music, movement and light.

Director/Choreographer  
**Lewis Major**



## The World is Looking for You

Together, one woman and an audience go searching in the snow. *The World is Looking for You* is inspired by a real event where a 'missing woman' unwittingly joined a search party and set out to find herself.

Director  
**Daisy Brown**  
Writer  
**Finegan Kruckemeyer**

Performer  
**Sarah Brokensha**  
Composer  
**Mario Spate**  
Designer  
**Wendy Todd**

### VARIOUS VENUES

For public showing dates and times visit:

[adelaidefestivalcentre.com.au/whats-on/inspacedevelopments](http://adelaidefestivalcentre.com.au/whats-on/inspacedevelopments)

Entry to showings is FREE

Program Partner





## Of Boys and Men

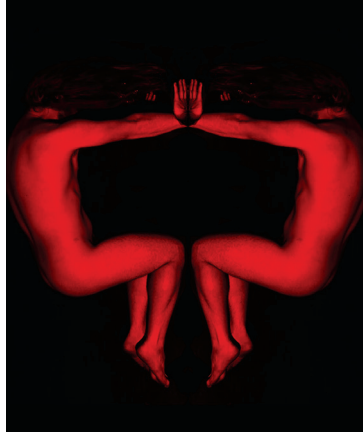
What does it mean to be a dancer? What does it mean to be a man? *Of Boys and Men* is a deeply personal exploration of manhood and identity performed by five young male dancers with a disability.

Co-creators/Dancers  
**Joshua Campton, Kayah Guenther, Lorcan Hopper, Max McCauley and Zakariah Ghomi**

Co-creator/Director  
**Paul Gazzola**

Costume design  
**Gaelle Mellis**

This project has been supported by Arts South Australia through the Richard Llewellyn Deaf and Disability Arts Program, The Australia Council for the Arts and OSCA



## Masc

Queer music duo Winter Witches fuses elements of neoclassical with slow-wave electronica in emotive live art-meets-music performances. Their new work *Masc* is a moving, live song cycle questioning the insidious nature of a binary, gendered world.

Made and performed by  
**Winter Witches (Jason Sweeney & Em König)**  
 in collaboration with  
**Kerrin Rowlands**



## Nil By Mouth

Thrilling, gruelling and hilarious, *Nil By Mouth* is a durational theatre piece that is part scripted, part improvised, and part re-enactment of the forces that shaped the tension and tragedy of Sydney's 2014 Lindt Café siege.

*A Theatre Republic production*

Playwright  
**Duncan Graham**

Director  
**Corey McMahon**

Actors  
**Matt Crook, Eugenia Fragos, Rory Walker**

Lighting and AV Designer  
**Chris Petridis**



## Aphrodite and the Invisible Consumer Gods

Featuring audience interaction, humour and dance. This work follows the Goddess Aphrodite as she travels to the 21st century. What she finds is a media saturated society that sexualizes and objectifies women and fuels unrealistic expectations.

Writer, Devisor, Performer  
**Sam Donvito**

Devisor, Performer  
**Ellen Graham**



## Digging a Hole to China

A woman digs many holes in her desire to build a tunnel. On the other side, someone is digging too. This new cross-cultural theatre work by Ellen Steele examines Australia and China's ever evolving relationship.

Performer/Devisor  
**Ellen Steele**

Technology Creative/Dramaturg  
**Dan Koerner**

Writer/Researcher  
**Cher Tan**

Design Consultant  
**Meg Wilson**

Artistic Collaborator  
**Daisy Brown**



## Still Point of a Turning World

*Still Point of a Turning World* is an immersive, participatory, performance installation and it's yours to explore. Wander around or find a place to sit and experience small scenes, poetic games, stories and meetings between audience and performers.

Collaborators  
**Sarah John, Emma Beech, Marga Socias, Tim Overton, Michelle 'Maddog' Delaney, Janice Vitovsky**